



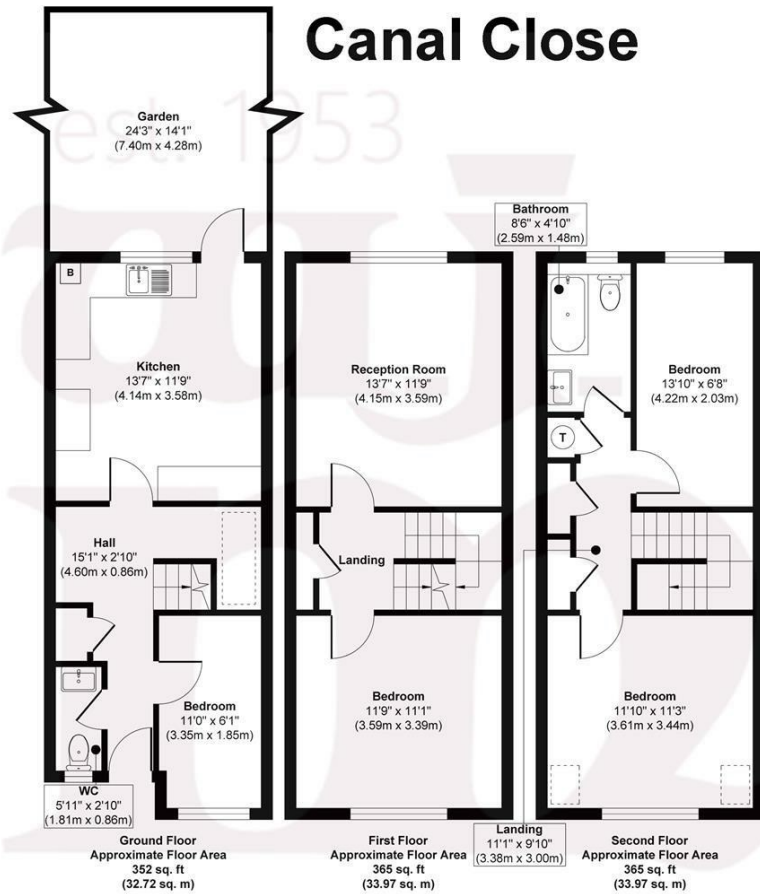
CANAL CLOSE, E1

£700,000 FREEHOLD

- Chain free
- Estate permit parking
- Modern bathroom suite
- 1082sq ft / 101sq m
- South facing garden
- Great potential as a family home

wj.
meade

Canal Close



WJ Meade are pleased to present this end of terrace townhouse, set in a residential cul-de-sac next to the Regents canal in Stepney. The accommodation is arranged over three floors, totalling 1082sq ft, with four bedrooms, first floor reception room, eat-in kitchen, guest cloakroom on the ground floor and a family bathroom suite. To the rear there is a South facing paved garden which extends to approximately 25ft. This is a sizable family dwelling, close to amenities, transport links and public green spaces.

All sizes are approximate. The Agent has not tested any apparatus, equipment, fixtures and fittings, or services and so cannot verify that they are in working order or fit for the purpose. A buyer is advised to obtain verification from their Solicitors or Surveyor. Photographs are for illustration purposes only and may depict items, which are not for sale or included in the sale price. References to tenure of a property are based upon information supplied by the vendor. The agent has not had sight of the title documents, a buyer is advised to obtain verification from their solicitor. Money Laundering Regulations 2003: Intending purchasers will be asked to produce identification, documentation at a later stage and we would ask for your co-operation in order that there will be no delay in agreeing the sale.

These particulars are intended to give a fair description of the property only and are in no way guaranteed, nor do of any contract. They are issued on the express condition that all negotiations are conducted through W.J. Meade Estate Agents. All subject to contract and to being unsold.

Council tax band E
 Current EPC Rating 66
 Tenure: Freehold

